

WEST BRANCH - ROSE CITY AREA SCHOOLS SURLINE ELEMENTARY/MIDDLE SCHOOL LIGHTING IMPROVEMENTS

WEST BRANCH, MICHIGAN



ANTHONY P. ESSON
ARCHITECT
PO BOX 478
GAYLORD, MICHIGAN
(989) 732-9585
TELEPHONE

DRAWING TITLE
TITLE SHEET
PROJECT INFORMATION

PROJECT TITLE
WEST BRANCH ROSE CITY AREA SCHOOLS
SF1.3 - SURLINE ELEMENTARY/MIDDLE SCHOOL LIGHTING IMPROVEMENTS
WEST BRANCH MICHIGAN

PROJECT NO.
263-18H

DATE
NOV. 18, 2020

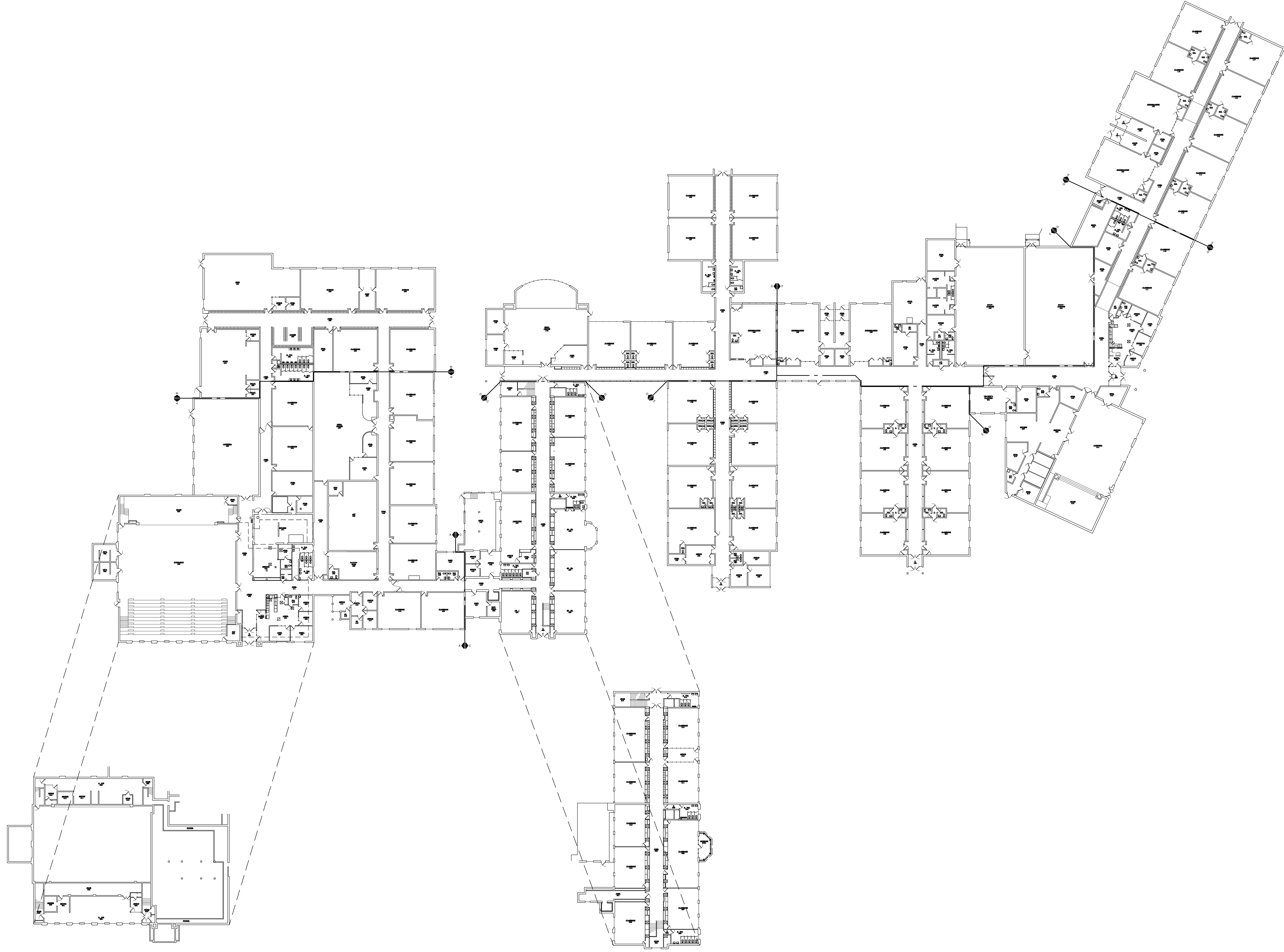
SHEET
T

STATE OF MICHIGAN
REGISTRATION

PROJECT DESCRIPTION
SURLINE ELEMENTARY/MIDDLE HVAC IMPROVEMENTS
<small>IN GENERAL, WORK OF THE CONTRACT INCLUDES: 1. RETROFIT LIGHTING FIXTURES FOR LED IN DESIGNATED ROOMS. 2. REPLACE EXISTING LIGHT FIXTURES IN DESIGNATED ROOMS. 3. PROVIDE PERMANENT ELECTRICAL RECEPTACLES FOR PROJECTION EQUIPMENT IN DESIGNATED ROOMS.</small>

BUILDING DATA
SURLINE ELEMENTARY/MIDDLE HVAC IMPROVEMENTS
<small>APPLICABLE CODES 2015 MICHIGAN CODE SERIES 2012 NFPA 101 LIFE SAFETY CODE USE AND OCCUPANCY CLASSIFICATION USE GROUP E - EDUCATIONAL CONSTRUCTION TYPE MSG CONSTRUCTION TYPE IIS NFPA 101 CONSTRUCTION TYPE II(000) BUILDING AREA 155,246 sf WORK AREA LIGHTING REPLACEMENT - 36,778 sf FIRE SUPPRESSION NONE OCCUPANT LOAD (ACTUAL) STUDENTS: 1357 STAFF: 151</small>

SHEET INDEX
SURLINE ELEMENTARY/MIDDLE HVAC IMPROVEMENTS
<small>T TITLE SHEET / PROJECT INFORMATION A0.1 COMPOSITE FLOOR PLAN E1.1 FLOOR PLAN PART "A" - ELECTRICAL E1.2 FLOOR PLAN PART "B" - ELECTRICAL E1.3 FLOOR PLAN PART "C" - ELECTRICAL E1.4 FLOOR PLAN PART "D" - ELECTRICAL E1.5 FLOOR PLAN PART "E" - ELECTRICAL E1.6 FLOOR PLAN PART "F" - ELECTRICAL E1.7 FLOOR PLAN PART "G" - ELECTRICAL E1.8 FLOOR PLAN PART "H" - ELECTRICAL</small>



LOWER GYMNASIUM PLAN

UPPER FLOOR PLAN

COMPOSITE FLOOR PLAN
SCALE: 1" = 50'-0"



SHEET	A0.1	DATE	NOV. 18, 2020	PROJECT NO.	263-18H	PROJECT TITLE	WEST BRANCH ROSE CITY AREA SCHOOLS SURLINE ELEMENTARY/MIDDLE SCHOOL LIGHTING IMPROVEMENTS WEST BRANCH, MICHIGAN	DRAWING TITLE	COMPOSITE FLOOR PLAN	ANTHONY P. ESSON ARCHITECT PO BOX 478 GAYLORD, MICHIGAN (889) 732-0585 TELEPHONE

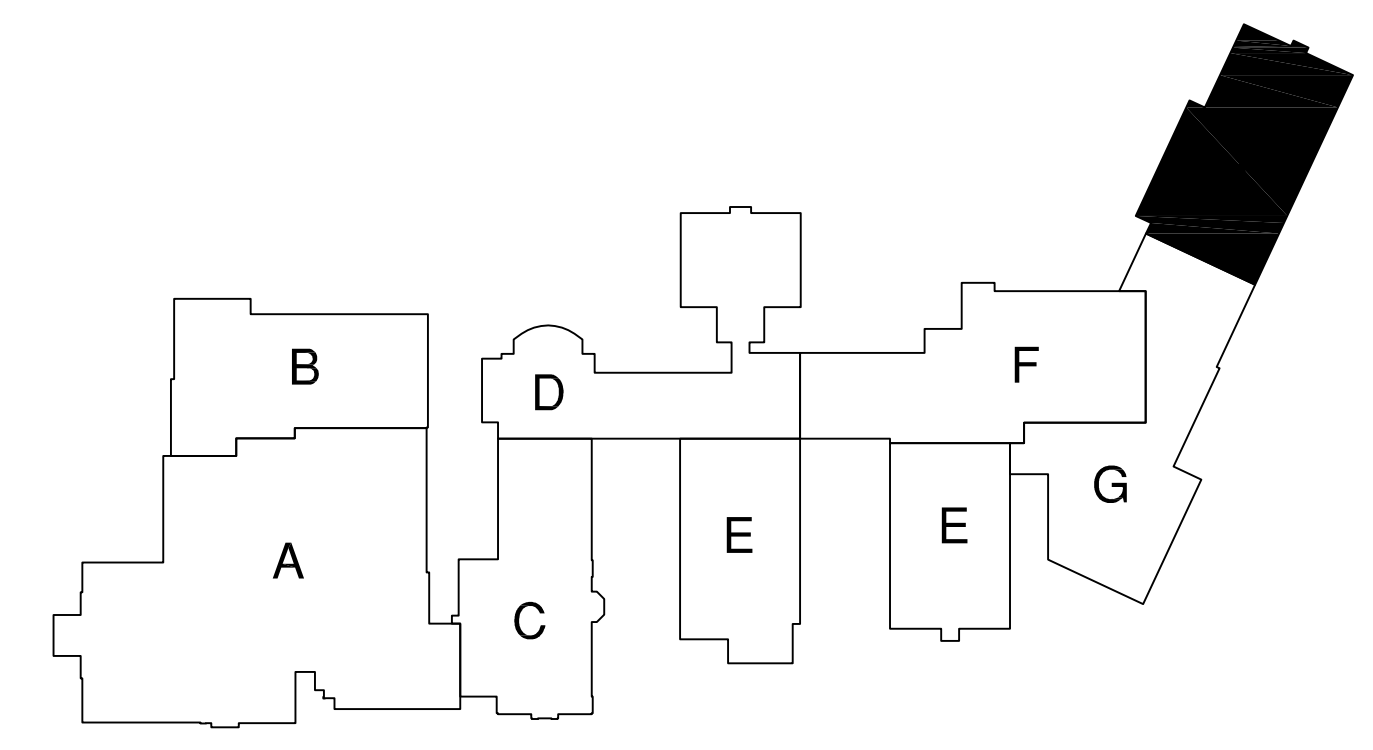
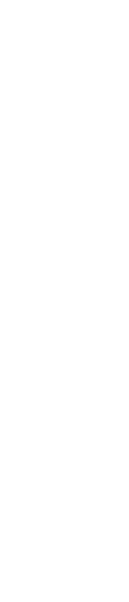
CHANGES TO PLANS AND SPECIFICATIONS

THESE DRAWINGS ARE THE PROPERTY OF ANTHONY P. ESSON ARCHITECT. ANY REUSE, REPRODUCTION, OR MODIFICATION OF ANY PART OF THESE DRAWINGS WITHOUT THE WRITTEN PERMISSION OF ANTHONY P. ESSON ARCHITECT IS STRICTLY PROHIBITED. THE USER OF THESE DRAWINGS SHALL BE RESPONSIBLE FOR OBTAINING ALL NECESSARY PERMITS, LICENSES, AND APPROVALS FROM THE APPROPRIATE AGENCIES AND AUTHORITIES. THE USER SHALL BE RESPONSIBLE FOR VERIFYING THE ACCURACY OF ALL INFORMATION PROVIDED TO ANTHONY P. ESSON ARCHITECT AND FOR OBTAINING ALL NECESSARY INFORMATION FROM THE APPROPRIATE AGENCIES AND AUTHORITIES. ANTHONY P. ESSON ARCHITECT SHALL NOT BE RESPONSIBLE FOR ANY ERRORS, OMISSIONS, OR INADEQUACIES IN THESE DRAWINGS OR FOR ANY CONSEQUENCES ARISING FROM THE USE OF THESE DRAWINGS. THE USER SHALL BE RESPONSIBLE FOR OBTAINING ALL NECESSARY INFORMATION FROM THE APPROPRIATE AGENCIES AND AUTHORITIES. ANTHONY P. ESSON ARCHITECT SHALL NOT BE RESPONSIBLE FOR ANY ERRORS, OMISSIONS, OR INADEQUACIES IN THESE DRAWINGS OR FOR ANY CONSEQUENCES ARISING FROM THE USE OF THESE DRAWINGS.

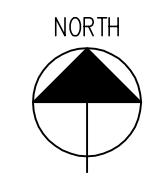
1874 ANNE DR.
LANSING, MICHIGAN 48208
BAYS SHORE ARCHITECTS, INC.
LANSING, MICHIGAN 48208
TEL: (313) 498-8883
FAX: (313) 498-8884
larry@baysshoreengineering.com

PROJECT NO. 1908-04

ANTHONY P. ESSON ARCHITECT
PO BOX 479
GAYLORD, MICHIGAN
TELEPHONE: (689) 732-0585



GENERAL NOTE:
1. SEE OWNER FOR THE EXACT LOCATION OF EACH EXISTING PROJECTION AND THE LOCATION OF EACH NEW DISPLAY RECEPTACLE.



FLOOR PLAN PART "H" - ELECTRICAL

SCALE: 1/8" = 1'-0"

KEYED PLAN NOTES:
1 EXISTING TV SCREEN/PROJECTION UNIT TO REMAIN. NO NEW WORK IN THIS ROOM.
2 EXISTING PROJECTION UNIT IS CEILING MOUNTED. INSTALL NEW CEILING MOUNTED RECEPTACLE CLOSE TO PROJECTION UNIT, SUCH THAT THE 6' POWER CORD CAN REACH THE PROJECTION UNIT. USE NEAREST NON-LIGHTING CIRCUIT, AS REQUIRED.

SHEET	DATE	PROJECT NO.	PROJECT TITLE
	1/11/2020	263-81H	WEST BRANCH ROSE CITY AREA SCHOOLS SURLINE ELEMENTARY/MIDDLE SCHOOL LIGHTING IMPROVEMENTS WEST BRANCH, MICHIGAN
DRAWING TITLE	FLOOR PLAN PART "H" - ELECTRICAL		
	ELECTRICAL		

E1.8