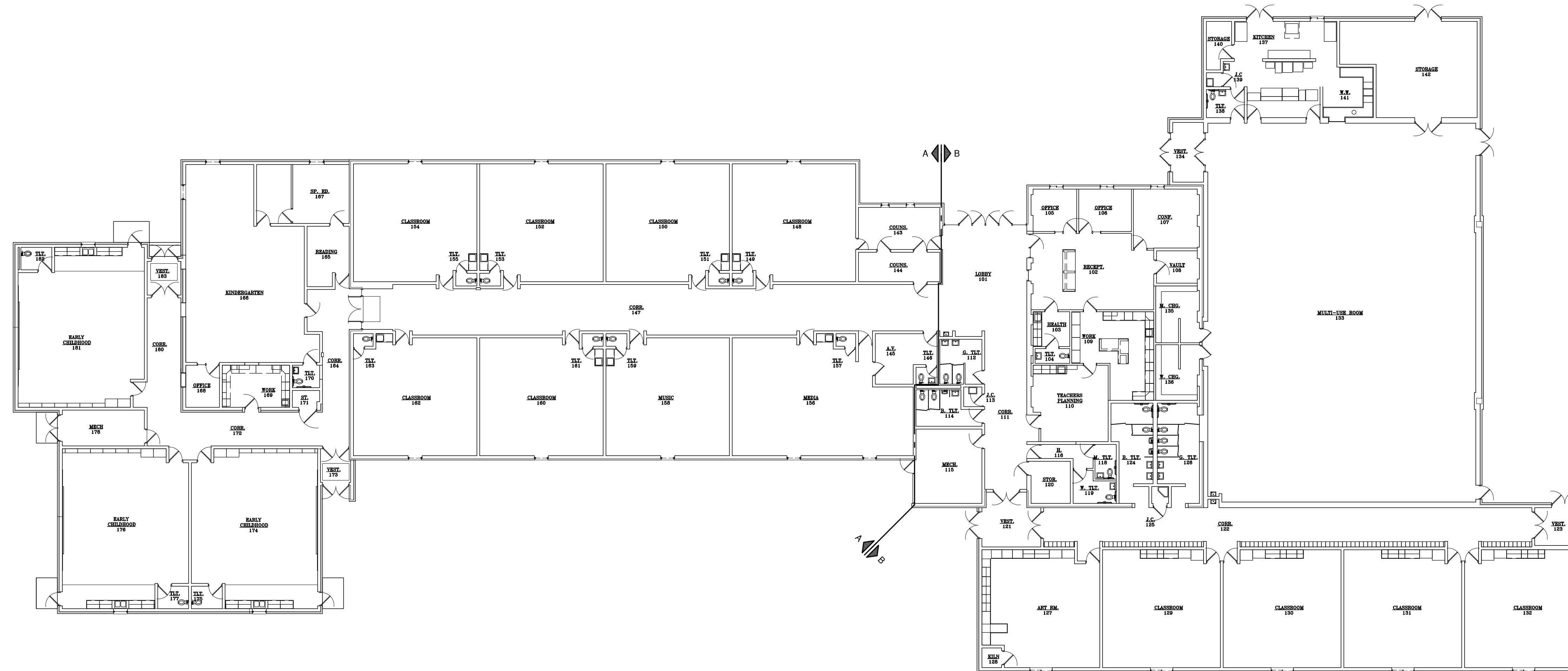


CENTRAL LAKE PUBLIC SCHOOLS - PROJECT SF1.3 2021 SINKING FUND PROJECTS ELEMENTARY SCHOOL WINDOW REPLACEMENT CENTRAL LAKE, MICHIGAN



COMPOSITE PLAN
 SCALE: $\frac{1}{4}'' = 1'-0''$

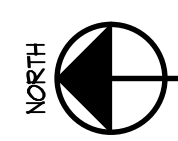
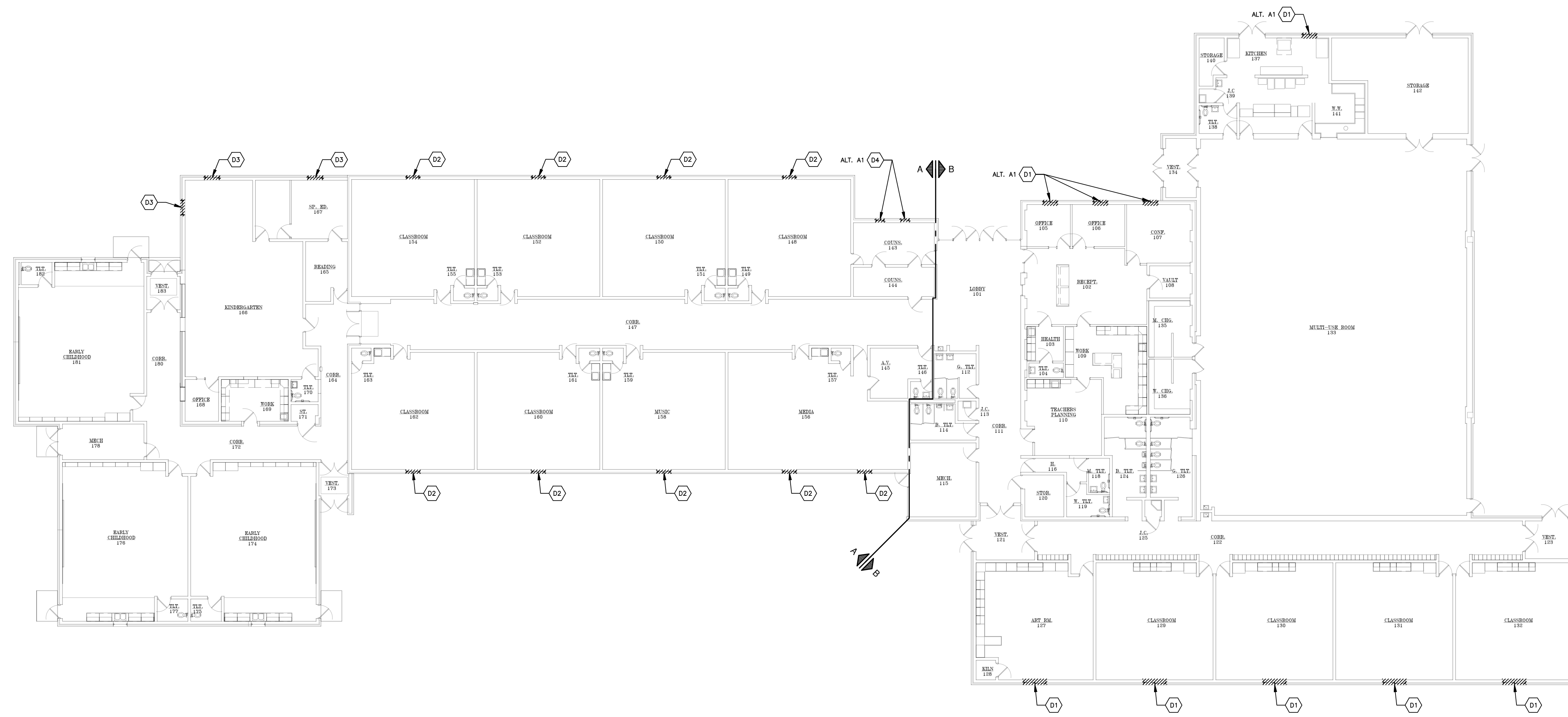
BID ALTERNATES
BID ALTERNATE A1 (ADD) - NEW WINDOWS AS INDICATED: BASE BID: NO WORK IN OPENINGS INDICATED AS ALT. A1. ALTERNATE BID: DEMOLISH EX'G. (BY OWNER'S DEMOLITION/ABATEMENT CONTRACTOR, AND INSTALL NEW WINDOWS.

CODE DATA
APPLICABLE CODES 2015 MICHIGAN CODE SERIES 2012 NFPA 101 LIFE SAFETY CODE USE AND OCCUPANCY CLASSIFICATION USE GROUP E - EDUCATIONAL CONSTRUCTION TYPE MBO CONSTRUCTION TYPE IIB NFPA 101 CONSTRUCTION TYPE II(000) BUILDING AREA 35,365 sf FIRE SUPPRESSION NONE OCCUPANT LOAD (ACTUAL) STUDENTS: 175 STAFF: 30

SHEET INDEX										
<table style="width: 100%; border-collapse: collapse;"> <tr> <td style="width: 20px; text-align: center;">T</td> <td>TITLE SHEET, PROJECT INFORMATION</td> </tr> <tr> <td style="text-align: center;">D0.1</td> <td>DEMOLITION PLAN</td> </tr> <tr> <td style="text-align: center;">A1.1</td> <td>FLOOR PLAN - PART "A"</td> </tr> <tr> <td style="text-align: center;">A1.2</td> <td>FLOOR PLAN - PART "B"</td> </tr> <tr> <td style="text-align: center;">A2.1</td> <td>WINDOW ELEVATIONS / HEAD, JAMB & SILL DETAILS</td> </tr> </table>	T	TITLE SHEET, PROJECT INFORMATION	D0.1	DEMOLITION PLAN	A1.1	FLOOR PLAN - PART "A"	A1.2	FLOOR PLAN - PART "B"	A2.1	WINDOW ELEVATIONS / HEAD, JAMB & SILL DETAILS
T	TITLE SHEET, PROJECT INFORMATION									
D0.1	DEMOLITION PLAN									
A1.1	FLOOR PLAN - PART "A"									
A1.2	FLOOR PLAN - PART "B"									
A2.1	WINDOW ELEVATIONS / HEAD, JAMB & SILL DETAILS									

STATE OF MICHIGAN
REGISTRATION

SHEET	DATE	PROJECT NO.	DRAWING TITLE
T	FEB. 5, 2021	267-18C	CENTRAL LAKE PUBLIC SCHOOLS - PROJECT SF1.3 ELEMENTARY SCHOOL WINDOW REPLACEMENT CENTRAL LAKE, MICHIGAN
ANTHONY P. ESSON ARCHITECT PO BOX 479 GAYLORD, MICHIGAN TELEPHONE: (989) 732-0565			



DEMOLITION PLAN

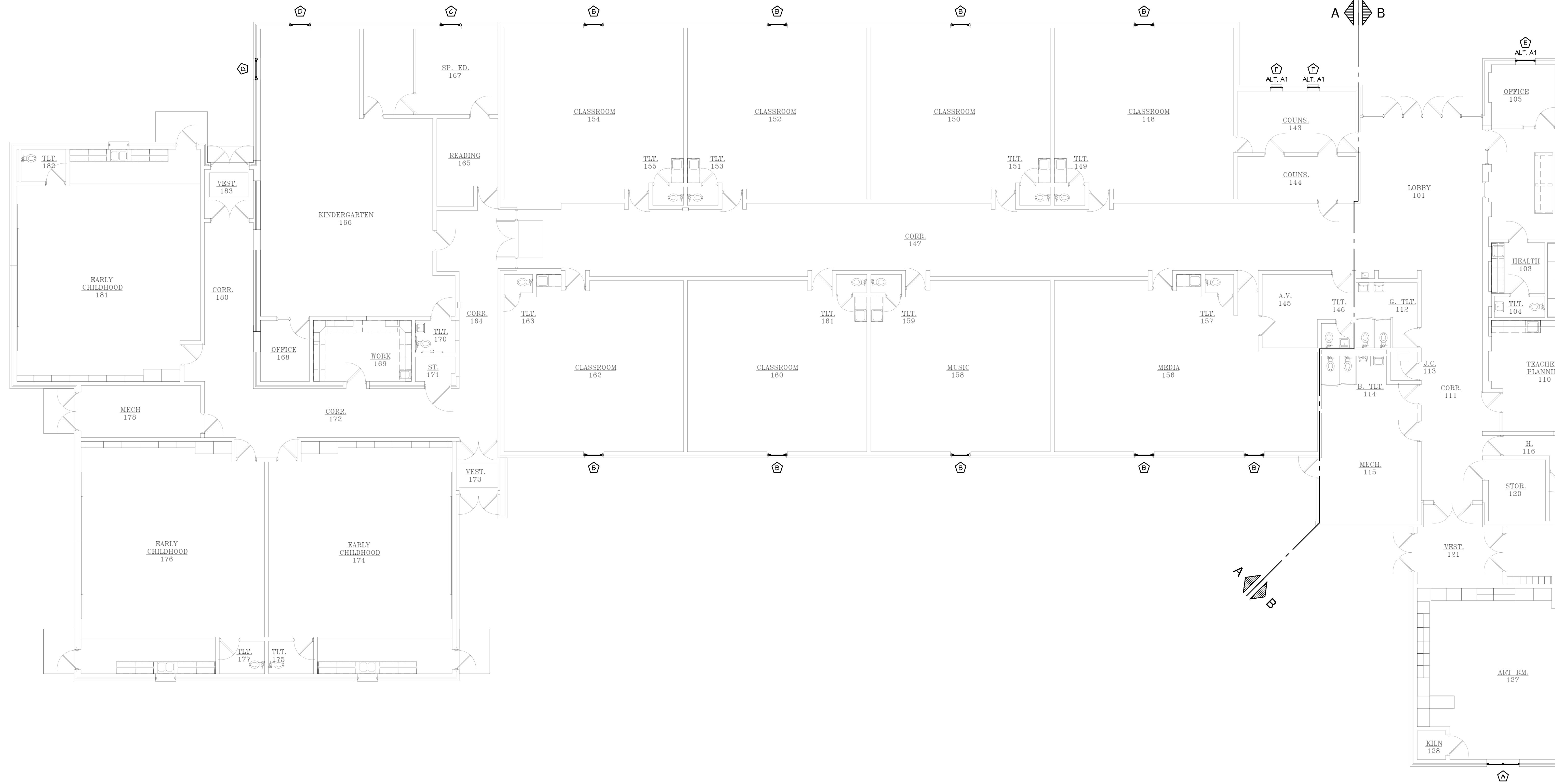
SCALE: $\frac{1}{8}'' = 1'-0''$

GENERAL DEMOLITION NOTES

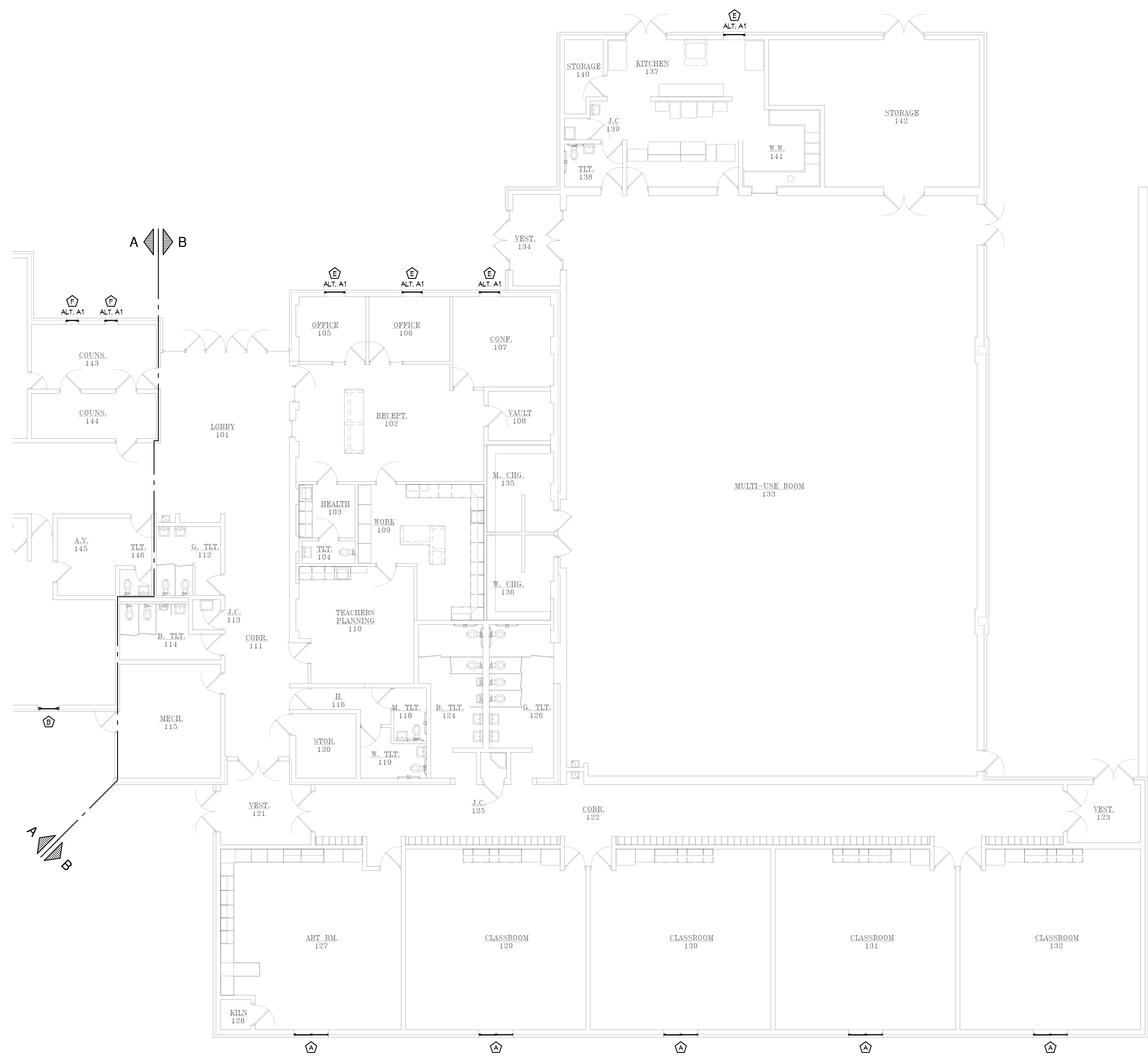
REMOVE EX'G ASSEMBLIES TO THE EXTENT REQUIRED FOR THE INSTALLATION OF NEW WORK, AND TO ALLOW FOR CONNECTION OF NEW WORK TO EX'G ADJACENT CONSTRUCTION. ALL EX'G CONDITIONS ARE TO BE FIELD VERIFIED. CONTRACTOR SHALL MAKE NECESSARY ADJUSTMENTS TO DEMOLITION AS REQ'D TO ACHIEVE THE OVERALL DESIGN INTENT.

KEYED DEMOLITION NOTES

- D1 REMOVE EX'G WINDOW(S), INTERIOR QUARRY TILE STOOL, AND TRIM BACK TO ROUGH MASONRY OPENING. NEW HEAD, JAMB, AND SILL DETAILS DEPICT ITEMS TO REMAIN. ALL DEMOLITION BY OWNER'S DEMOLITION/ABATEMENT CONTRACTOR. SCHEDULE DEMOLITION TO COINCIDE WITH NEW INSTALLATION.
- D2 REMOVE EX'G WINDOW, INTERIOR AND EXTERIOR TRIM, EXTERIOR ACM PANELS, AND WOOD STUD FRAMING BACK TO ROUGH OPENING. NEW HEAD, JAMB, AND SILL DETAILS DEPICT ITEMS TO REMAIN. ALL DEMOLITION BY OWNER'S DEMOLITION/ABATEMENT CONTRACTOR. SCHEDULE DEMOLITION TO COINCIDE WITH NEW INSTALLATION.
- D3 REMOVE EX'G WINDOW, INTERIOR AND EXTERIOR TRIM, EXTERIOR ALUM. PANELS AND FURRING, WOOD STUD FRAMING BELOW WINDOWS, AND EX'G JAMB HALTERS BACK TO ROUGH MASONRY OPENING. NEW HEAD, JAMB, AND SILL DETAILS DEPICT ITEMS TO REMAIN. ALL DEMOLITION BY OWNER'S DEMOLITION/ABATEMENT CONTRACTOR. SCHEDULE DEMOLITION TO COINCIDE WITH NEW INSTALLATION.
- D4 REMOVE EX'G WINDOW, INTERIOR AND EXTERIOR TRIM, AND JAMB AND SILL HALTERS/BUCKING BACK TO ROUGH MASONRY OPENING. NEW HEAD, JAMB, AND SILL DETAILS DEPICT ITEMS TO REMAIN. ALL DEMOLITION BY OWNERS DEMOLITION/ABATEMENT CONTRACTOR. SCHEDULE DEMOLITION TO COINCIDE WITH NEW INSTALLATION.

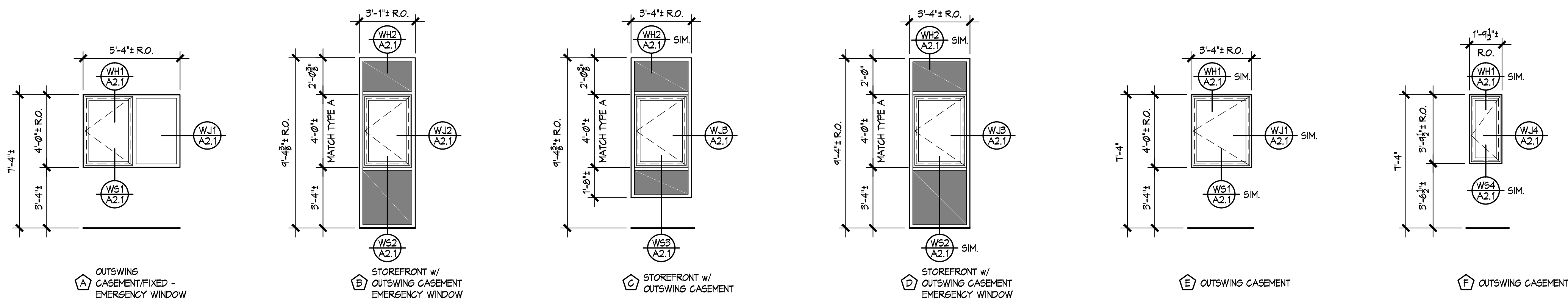


FLOOR PLAN - PART "A"
 SCALE: 1/8" = 1'-0"




FLOOR PLAN - PART "B"
 SCALE: $\frac{1}{8}'' = 1'-0''$

SHEET	DATE	PROJECT NO.	PROJECT TITLE	DRAWING TITLE	ANTHONY P. ESSON ARCHITECT PO BOX 479 GAYLORD, MICHIGAN (989) 732-9585
					A1.2



WINDOW ELEVATIONS

SCALE: 1/2" = 1'-0"

