

Anthony Esson, Architect
PO Box 479
Gaylord, Michigan 49734

Gaylord Community Schools
SF 3.2 NEMSCA Transportation Office
Gaylord, Michigan

October 5, 2020

Project No. 284-20B

ADDENDUM NO. 1

This Addendum is being issued for the purpose of modifying and/or clarifying the original Bidding Documents dated September 18, 2020 and shall take precedence over them.

All work included herein shall be in accordance with the general requirements of the original bidding documents, except as specifically noted herein.

This Addendum is being sent to all known plan holders, suppliers, plan rooms, and governmental agencies having received Bidding Documents.

Revised Drawing Sheets A1, M1 and E2 dated October 5, 2020.

- Item No. 1: General – All Bid Categories: Note that Dumpsters will be provided by the Construction Manager. All Bid Categories are to exclude the cost of dumpsters from their Bids.
- Item No. 2: Refer to Bid Category 6.0 – General Trades: Furnishing and installation of all wood blocking and wood trim is by Bid Category 6.0.
- Item No. 3: Refer to Bid Category 6.0 – General Trades: Provide a separate price for winter conditions in the event that concrete work is delayed into winter months. Base Bid is to exclude the cost of winter conditions.
- Item No. 4: Refer to Bid Category 15.0 – Mechanical (HVAC): note that roofing penetrations and modifications must be completed by a Durolast Roofing certified Contractor.
- Item No. 4: Refer to revised drawing sheet A2: Note deletion of Keyed Demolition Tags D11 and Keyed Construction Tags A8 from the respective plans.
- Item No. 5: Refer to revised drawing sheet M1: Note changes in Ductless-Split Air-Source Heat Pump schedule and notes to add Mechanical Support Platform for AHP-TO mounting on roof and also Pipe Portal for refrigerant lines/electrical feeds to/from the AHP-TO and FC-TO.
- Item No. 6: Refer to revised Drawing sheet E2: Note change in location for panelboard TO outside of closet 47E2; and change to bus heater receptacles to regular 20A@120V GFCI/WP receptacles.

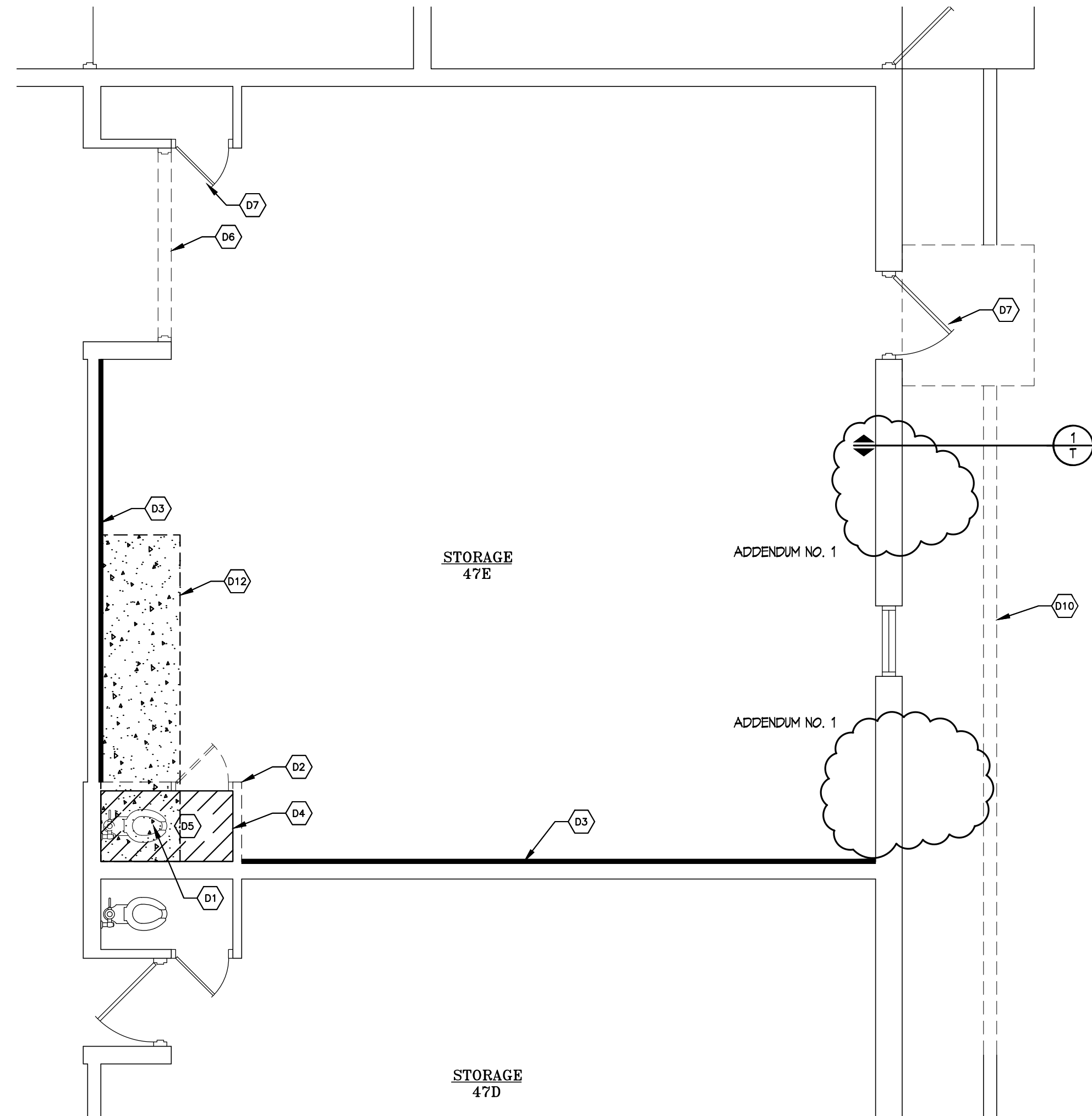
END OF ADDENDUM NO. 1

GENERAL DEMOLITION NOTES

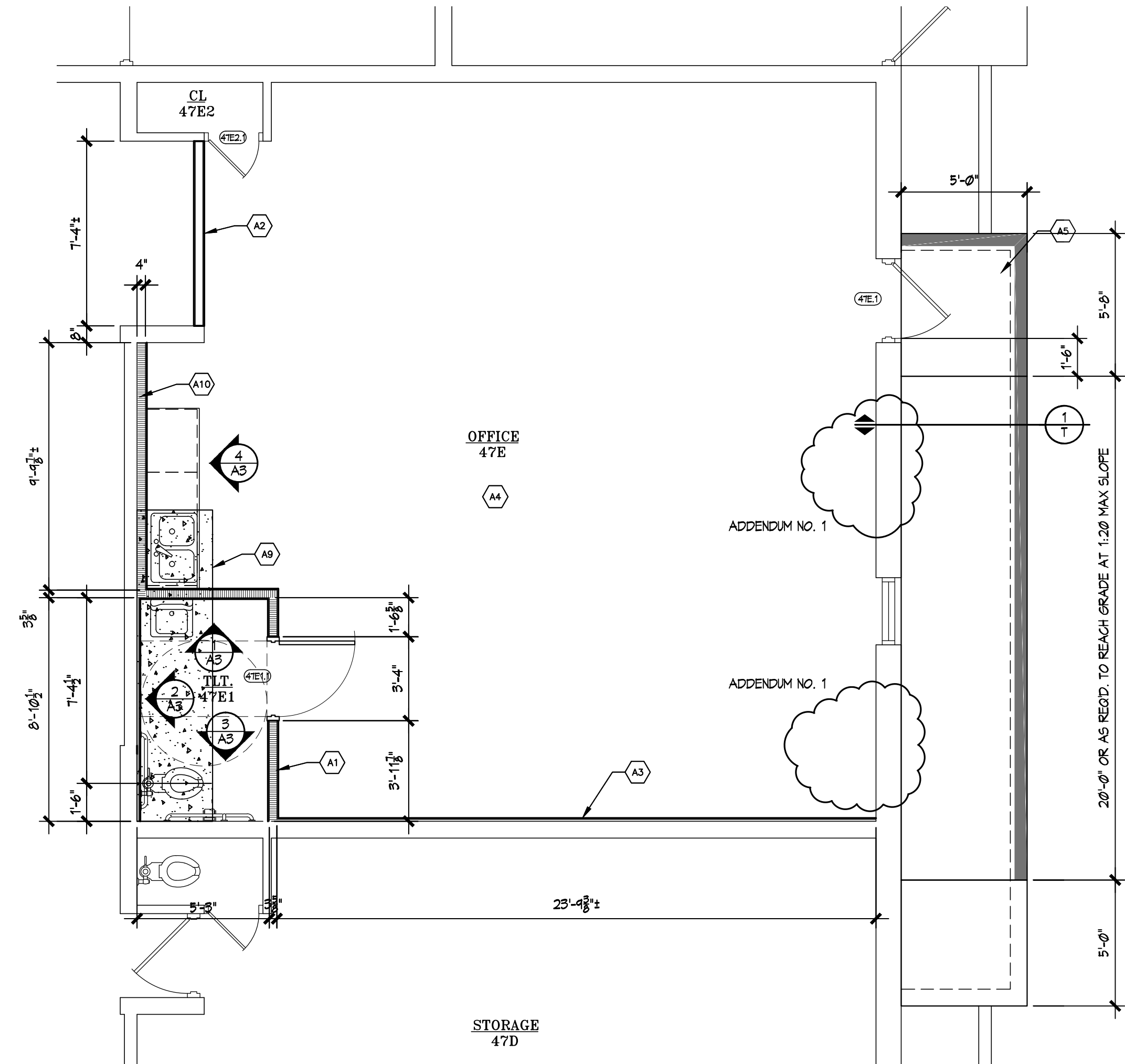
1. CONTRACTOR TO FIELD VERIFY ALL EX'G. CONDITIONS AND DIMENSIONS PRIOR TO BIDDING AND INCLUDE ANY INCIDENTAL WORK NECESSARY TO CONSTRUCT THE WORK IN ACCORDANCE WITH THE DESIGN INTENT OF THE CONTRACT DOCUMENTS IN THE BID. DISCREPANCIES BETWEEN ACTUAL CONDITIONS AND THOSE SHOWN ARE TO BE REPORTED TO THE ARCHITECT FOR CLARIFICATION PRIOR TO PROCEEDING WITH THE WORK.
2. DEMOLITION PLAN, NOTES, AND KEYED NOTES ARE DIAGRAMATIC AND INTENDED TO DESCRIBE THE OVERALL EXTENT OF DEMOLITION FOR BIDDING AND CONSTRUCTION PURPOSES. BIDDERS SHALL FIELD VERIFY ALL EXISTING CONDITIONS AFFECTING THE WORK, AND SHALL INCLUDE ALL COSTS ASSOCIATED WITH NECESSARY DEMOLITION, WHETHER OR NOT SUCH DEMOLITION IS SPECIFICALLY INDICATED IN THE PLAN, NOTES, AND/OR KEYED NOTES.
3. THE OWNER RESERVES FIRST RIGHT TO SALVAGE ITEMS AND MATERIALS REMOVED FROM THE WORK, OR SCHEDULED TO BE REMOVED FROM THE WORK, PRIOR TO DEMOLITION ACTIVITIES. THE OWNER MAY REMOVE, OR MAY TAG FOR REMOVAL, ITEMS INTENDED TO BE SALVAGED AND TURNED OVER TO THE OWNER. COORDINATE WITH OWNERS DESIGNATED PERSONNEL PRIOR TO DEMOLITION ACTIVITIES AND CAREFULLY REMOVE ITEMS TAGGED OR OTHERWISE IDENTIFIED FOR SALVAGE AND STOCKPILE IN LOCATION DESIGNATED BY OWNER.

KEYED DEMOLITION NOTES

- (D1) REMOVE EX'G. TOILET - SEE PLUMBING.
- (D2) REMOVE EX'G. MASONRY PARTITION INCLUDING DOOR AND FRAME.
- (D3) REMOVE EX'G. HORIZ. WOOD FURRING FROM WALLS.
- (D4) REMOVE EX'G. CERAMIC MOSAIC TILE.
- (D5) REMOVE ALL EX'G. TOILET AND BATH ACCESSORIES.
- (D6) REMOVE EX'G. HOLLOW METAL FRAME.
- (D7) REMOVE EX'G. MORTISE LATCHSET.
- (D8) REMOVE MISC. BLOCKING AND ITEMS FROM CEILING.
- (D9) REMOVE EX'G. LIGHT FIXTURE - SEE ELEC.
- (D10) REMOVE EX'G. STOOP AND CURB TO EXTENT REQ'D FOR NEW STOOP, WALK AND LANDING.
- (D11) REMOVE EX'G. O.A. GRILLE - SEE MECH.
- (D12) SAW-CUT AND REMOVE EX'G. CONC. SLAB AS REQ'D FOR NEW PLUMBING - SEE PLUMB'G.



DEMOLITION PLAN
SCALE: 1/4" = 1'-0"



FLOOR PLAN
SCALE: 1/4" = 1'-0"

GENERAL CONSTRUCTION NOTES

1. PATCH WALLS AND CEILINGS ADJACENT TO NEW WORK AS NOTED OR AS OTHERWISE REQUIRED TO BLEND NEW WORK INTO EXISTING WITH NEW MATERIALS AND FINISHES MATCHING EXISTING. FIELD VERIFY QUANTITY AND EXTENT OF WORK REQUIRED AND INCLUDE PROVISIONS FOR PATCHING WORK IN THE BID.

KEYED CONSTRUCTION NOTES

- (A1) CONSTRUCT NEW 3/8" MTL. STUD PARTITIONS w/ ACOUSTICAL INSULATION AND 5/8" GYPSUM BOARD EA. SIDE TO UNDERSIDE OF DECK.
- (A2) CONSTRUCT 3/8" MTL. STUD PARTITION w/ BATT INSULATION AND 5/8" FIRE-RATED GYPSUM BOARD EACH SIDE. FRAME IN 6'-4" w. x 7'-2" h. OPENING FOR IN CENTER OF PARTITION FOR FUTURE DOORS.
- (A3) INSTALL 5/8" METAL FURRING w/ 5/8" GYPSUM BOARD OVER EX'G. CMU WALL.
- (A4) POLISH EX'G. CONCRETE FLOOR TO SMOOTH AND CONSISTENT FINISH. SEE ROOM FINISH SCHEDULE.
- (A5) CONSTRUCT 5" CONCRETE STOOP, SLOPED WALKWAY TO GRADE(1.20), AND LANDING. SEE DETAILS. PAINT VERT. FACE AND 6" WIDE CURB DELINEATION - SAFETY YELLOW.
- (A6) INFILL EX'G. METAL DECK OPENINGS w/ SUSPENDED CLNG. CROSS TEES AND 2' x 4' CEILING TILE.
- (A7) INSTALL NEW PAINTED WOOD TRIM AT JUNCTION OF WALL AND CEILING AT ALL NEW PARTITIONS FULL PERIMETER.
- (A8) INFILL EX'G. MASONRY OPENING w/ CMU AND BRICK TO MATCH EX'G.
- (A9) PATCH CONC. TO MATCH EXISTING. DOWEL NEW CONC. INTO EX'G. w/ #4 BARS 18" O.C. REINFORCE CONC. MIX w/ FIBER REINFORCING.
- (A10) INSTALL 3/8" METAL STUDS w/ 5/8" GYPSUM BOARD OVER EX'G. CMU WALL.



GENERAL MECHANICAL NOTES:

- THESE DRAWINGS ARE DIAGRAMMATIC AND INDICATE THE GENERAL SCOPE OF WORK. CONTRACTOR SHALL PROVIDE ALL MECHANICAL SYSTEMS AND ASSOCIATED EQUIPMENT COMPLETE AND INCLUDE ALL NECESSARY OFFSETS, FITTINGS, AND OTHER COMPONENTS REQUIRED DUE TO INTERFERENCES, SPACE CONSTRAINTS, CODES, ETC.
- MECHANICAL SYSTEMS SHALL BE INSTALLED PER MICHIGAN MECHANICAL CODE, MICHIGAN PLUMBING CODE, INTERNATIONAL FUEL GAS CODE, APPLICABLE NFPA BUILDING CODES (I.E. 101, 90A, ETC.), AND APPLICABLE BUILDING CODES (I.E. MICHIGAN BUILDING CODE, ETC.).
- CONTRACTOR TO VERIFY REQUIREMENTS OF ALL EQUIPMENT WITH SHOP DRAWING SUBMITTALS PRIOR TO INSTALLATION. NOTIFY THE ENGINEER OF ANY CONFLICTS BETWEEN SHOP DRAWINGS AND PLANS.
- CONTRACTOR SHALL COORDINATE THE INSTALLATION OF MECHANICAL WORK WITH ALL OTHER TRADES. VERIFY ALL MECHANICAL AND ELECTRICAL CLEARANCES PRIOR TO THE FABRICATION OF ANY WORK. DUCTWORK, PIPING, ETC. SHALL NOT BE LOCATED DIRECTLY OVER ELECTRICAL PANELS/EQUIPMENT, OR INTERFERE WITH MECHANICAL/ELECTRICAL EQUIPMENT CLEARANCES.
- COORDINATE ALL FLOOR, WALL, AND ROOF PENETRATIONS, EQUIPMENT PADS, LOUVERS, ETC. WITH ARCHITECTURAL/STRUCTURAL TRADES PRIOR TO ROUGH-IN. UNLESS NOTED OTHERWISE, EACH SUBCONTRACTOR SHALL BE RESPONSIBLE FOR ALL CUTTING, CORING, PATCHING ASSOCIATED WITH THEIR WORK. CUTTING, CORING, PATCHING WORK SHALL BE PERFORMED BY A QUALIFIED SUB-CONTRACTOR AND MATCH EXISTING OR NEW FINISHES.

GENERAL MECHANICAL DEMOLITION NOTES:

- THESE DRAWINGS ARE DIAGRAMMATIC AND INDICATE THE GENERAL EXTENT OF THE WORK. THE EXTENT OF DEMOLITION WORK SHALL BE AS REQUIRED BY THE NEW WORK.
- THE CONTRACTOR SHALL VISIT THE SITE AND FAMILIARIZE HIMSELF WITH THE EXISTING SYSTEMS/EQUIPMENT PRIOR TO ISSUING HIS BID. (I.E. ALL EXISTING PIPE/DUCT SIZES AND ROUTINGS/LOCATIONS SHOWN ARE APPROXIMATE AND SHALL BE FIELD VERIFIED BY THE CONTRACTOR).
- ALL MECHANICAL ITEMS TO BE REMOVED SHALL BE REMOVED COMPLETE WITH ALL RELATED ITEMS INCLUDING, BUT NOT LIMITED TO, HANGERS, SUPPORTS, CONTROLS, ETC. REMOVED ITEMS SHALL BE LEGALLY DISPOSED OF OFF SITE. CAP ALL OPEN ENDED PIPING AND DUCTWORK.
- ANY INTERRUPTION OF EXISTING SERVICES AND/OR EQUIPMENT SHALL BE PERFORMED AT A TIME APPROVED, BY THE OWNER OR OWNER'S REPRESENTATIVE, AT LEAST (7) DAYS IN ADVANCE SO AS NOT TO INTERFERE WITH THE PRESENT BUILDING OPERATION.
- WHERE DEMOLITION OF EXISTING SERVICES ARE REQUIRED TO ACCOMMODATE THE PROJECT PHASING/SCHEDULING, AND SERVICES ARE TO BE INTERRUPTED IN AREAS THAT ARE REMAINING OCCUPIED, THE CONTRACTOR SHALL PROVIDE TEMPORARY SERVICES AND/OR CONNECTIONS TO THE OCCUPIED AREAS TO MAINTAIN ITS PRESENT OPERATION. IF SYSTEM SHUT DOWNS ARE REQUIRED, THE CONTRACTOR SHALL SCHEDULE WORK TO BE PERFORMED AT UNOCCUPIED HOURS.
- ALL ITEMS TO BE REMOVED AND/OR RELOCATED SHALL BE REMOVED AND/OR RELOCATED TOGETHER WITH ALL RELATED ITEMS AS REQUIRED BY THE NEW WORK TO BE PERFORMED.
- CONTRACTOR SHALL COORDINATE ALL REMOVAL AND/OR RELOCATION WITH THE EXTENT OF THE NEW WORK AND WITH ALL OTHER TRADES INVOLVED.
- UNLESS NOTED OTHERWISE, EACH SUBCONTRACTOR SHALL BE RESPONSIBLE FOR ALL CUTTING, CORING, PATCHING ASSOCIATED WITH THEIR WORK. CUTTING, CORING, PATCHING WORK SHALL BE PERFORMED BY A QUALIFIED SUB-CONTRACTOR AND MATCH EXISTING OR NEW FINISHES.

MECHANICAL SYMBOL LIST

SYMBOL	DESCRIPTION
	RECTANGULAR TAKE-OFF (SINGLE LINE)
	RECTANGULAR TAKE-OFF (DOUBLE LINE)
	ROUND TAKE-OFF (SINGLE LINE)
	ROUND TAKE-OFF (DOUBLE LINE)
	SPIN-IN FITTING (WITH VOLUME DAMPER)
	RECTANGULAR ELBOW (WITH TURNING VANES)
	RADIUS RECTANGULAR ELBOW
	RADIUS ROUND ELBOW
	RECTANGULAR ELBOW UP
	ROUND ELBOW UP
	RECTANGULAR ELBOW DOWN
	ROUND ELBOW DOWN
	DUCT DOWN (SINGLE LINE)
	CONCENTRIC TRANSITION (DOUBLE LINE)
	CONCENTRIC TRANSITION (SINGLE LINE)
	ECCENTRIC TRANSITION (DOUBLE LINE)
	ECCENTRIC TRANSITION (SINGLE LINE)
	CROSS SECTION OF SUPPLY AIR DUCT
	CROSS SECTION OF EXHAUST/RETURN AIR DUCT
	FLEXIBLE CONNECTION (DUCT)
	SQUARE CEILING DIFFUSER
	RETURN OR EXHAUST CEILING GRILLE
	TRANSFER GRILLE
	SUPPLY AIR GRILLE - CEILING OR FLOOR MOUNTED
	RETURN AIR GRILLE - CEILING OR FLOOR MOUNTED
	SUPPLY AIR GRILLE - SIDEWALL MOUNTED
	RETURN AIR GRILLE - SIDEWALL MOUNTED
	VOLUME DAMPER (MANUALLY ADJUSTABLE)
	MOTORIZED DAMPER
	ROOF EXH FAN VENTILATOR (PLAN VIEW)
	THERMOSTAT
	TEMPERATURE SENSOR

MECHANICAL ABBREVIATION LIST

ABBREVIATION	DESCRIPTION	ABBREVIATION	DESCRIPTION
A/C	AIR CONDITIONING	IN	INCHES
AFF	ABOVE FINISHED FLOOR	ISP	INTERNAL STATIC PRESSURE
APD	AIR PRESSURE DROP	KW	KILOWATT
BMS	BUILDING MANAGEMENT SYSTEM	LAT	LEAVING AIR TEMPERATURE
BTU	BRITISH THERMAL UNIT	LDB	LEAVING DRY BULB TEMPERATURE
BTUH	BRITISH THERMAL UNITS PER HOUR	LRA	LOCKED ROTOR AMPS
CFH	CUBIC FEET PER HOUR	LWB	LEAVING WET BULB TEMPERATURE
CFM	CUBIC FEET PER MINUTE	MA	MIXED AIR
COND	CONDENSATE	MAX	MAXIMUM
CONT	CONTINUATION OR CONTINUED	MBH	THOUSAND BRITISH THERMAL UNITS PER HOUR
CONTR	CONTRACTOR	M.C.	MECHANICAL CONTRACTOR
COORD	COORDINATE	MCA	MINIMUM CIRCUIT AMPS
CU	CONDENSING UNIT	MECH	MECHANICAL
CW	DOMESTIC COLD WATER	MFR	MANUFACTURER
DB	DRY BULB TEMPERATURE	MIN	MINIMUM
DDC	DIRECT DIGITAL CONTROL	MISC	MISCELLANEOUS
DEG	DEGREES	N.C.	NOISE CRITERIA
DN	DOWN	NOM	NOMINAL
(E)	EXISTING	OA	OUTSIDE AIR
EA	EXHAUST AIR	PC	PUMPED CONDENSATE
EAT	ENTERING AIR TEMPERATURE	P.C.	PLUMBING CONTRACTOR
EBH	ELECTRIC BASEBOARD HEATER	PD	PRESSURE DROP
E.C.	ELECTRICAL CONTRACTOR	PRI	PRIOR TO ROUGH-IN
EDB	ENTERING DRY BULB TEMPERATURE	RA	RETURN AIR
EF	EXHAUST FAN	RAG	RETURN AIR GRILLE OR REGISTER
EG	EXHAUST GRILLE OR REGISTER	REL.A	RELIEF AIR
ELEC	ELECTRICAL	RFL	REFRIGERANT LIQUID
ELEV	ELEVATION	RFS	REFRIGERANT SUCTION
EMS	ENERGY MANAGEMENT SYSTEM	RH	RELATIVE HUMIDITY
ESP	EXTERNAL STATIC PRESSURE	RPM	REVOLUTIONS PER MINUTE
EUH	ELECTRIC UNIT HEATER	SA	SUPPLY AIR
EWB	ENTERING WET BULB TEMPERATURE	SAD	SUPPLY AIR DIFFUSER
EXH	EXHAUST	SAG	SUPPLY AIR GRILLE OR REGISTER
(F)	FUTURE	SP	STATIC PRESSURE
F.A.	FIRE ALARM SUBCONTRACTOR	SqFt	SQUARE FOOT/SQUARE FEET
FA	FRESH AIR	STM	STEAM
FD	FLOOR DRAIN	T.C.	TEMPERATURE CONTROLS SUBCONTRACTOR
FLA	FULL LOAD AMPS	TSP	TOTAL STATIC PRESSURE
FLOR	FLOOR	TYP	TYPICAL
FFM	FEET PER MINUTE	U/G	UNDERGROUND (BELOW GRADE)
FT	FEET	UH	UNIT HEATER
FTR	FINNED TUBE RADIATOR	UL	UNDERWRITERS LABORATORY
G	GAS (NATURAL GAS/PROPANE)	V	VENT
GPH	GALLONS PER HOUR	VD	VOLUME DAMPER
GPM	GALLONS PER MINUTE	VTR	VENT THRU ROOF
HP	HORSEPOWER	WB	WET BULB TEMPERATURE
HR	HOUR	WG	WATER GAUGE
HTG	HEATING		

ELECTRIC BASEBOARD HEATER (HYDRONIC) SCHEDULE

UNIT I.D.	CAPACITY WATTS	BTU/HR	ENCLOSURE				ELECTRICAL			MODEL NO.		
			LENGTH (INCHES)	HEIGHT (INCHES)	DEPTH (INCHES)	FINISH	CONSTRUCTION	VOLTS	PHASE			AMPS
EBH-72	1,500	5,100	72	8.5	3	WHITE OR BROWN?	12 GA. ALUMINUM	208	1	7.2	F3915-72	SEE NOTES
EBH-96	2,000	6,826	96	8.5	3	WHITE OR BROWN?	12 GA. ALUMINUM	208	1	9.6	F3920-96	SEE NOTES

- NOTES:
- MODEL NUMBERS ARE MARKEL. Q-MARK AND ELECTROMODE MAY BE BID AS EQUALS.
 - HEATERS SHALL HAVE THE FOLLOWING STANDARD FEATURES:
ENTIRE HEATING CASING SHALL BE CONSTRUCTION OF 6063 EXTRUDED ALUMINUM WITH MINIMUM THICKNESS OF 0.100" (12 GA.); HEATING ELEMENT SHALL BE HIGH QUALITY NICHROME WIRE ENCASED IN MAGNESIUM OXIDE HEAT TRANSFER LIQUID AND SEALED IN COPPER TUBE WITH ALUMINUM FINNS; AUTOMATIC LINEAR THERMAL LIMIT SHALL EXTEND ENTIRE HEATER LENGTH AND PROTECT HEATER IN CASE OF AN OVER-TEMPERATURE CONDITION.
 - HEATERS SHALL HAVE THE FOLLOWING OPTIONAL CONTROL FEATURES (MOUNTED IN J-BOX ENCLOSURES AT EITHER END OF THE HEATER):
3A. OPTIONAL CIRCUIT BREAKER DISCONNECT SWITCH (20 AMP @ 120-277VAC: DPST) MOUNTED IN END J-BOX.
3B. WHERE SHOWN ON PLAN AS UNIT MOUNTED - PROVIDE OPTIONAL INTEGRAL T-STAT LOCATED IN END J-BOX WITH TAMPER-PROOF ADJUSTMENT KNOB (0°F - 110°F).
 - CONTRACTOR SHALL MOUNT ON WALL 2 INCHES ABOVE FLOOR, EXCEPT IN BATHROOMS WHICH SHALL BE MOUNTED AT 4 INCHES AFF.

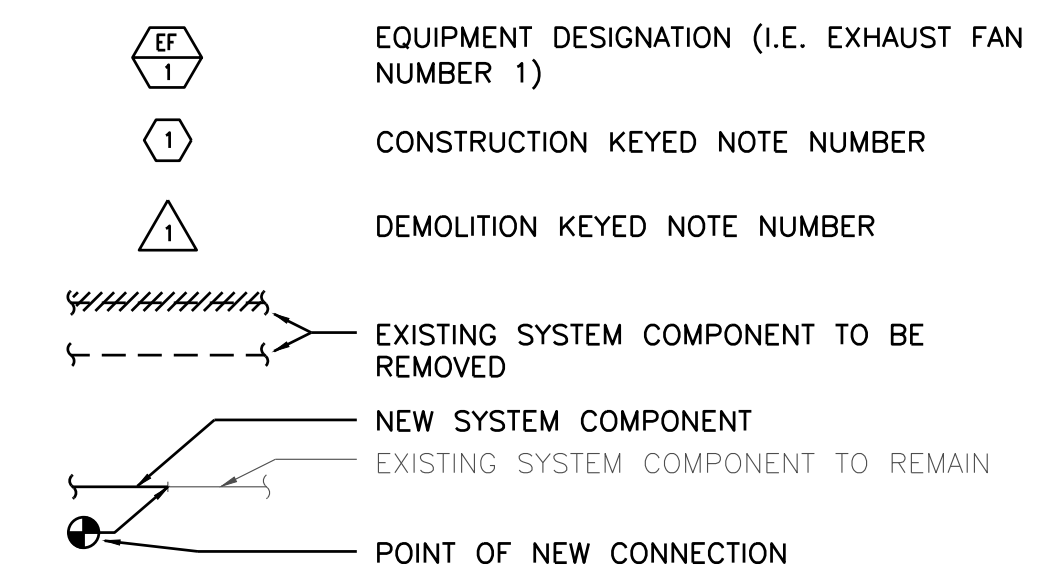
DUCTLESS-SPLIT AIR-SOURCE HEAT PUMP UNIT SCHEDULE

FAN COIL UNIT ID	COOLING (BTU/HR) @ 95F	HEATING (BTU/HR) @ 5F	SOUND dB (A)	AIRFLOW CFM	INDOOR FAN COIL UNIT			OUTDOOR HEAT PUMP SECTION					REMARKS				
					VOLTS @10	FAN UNIT MCA	MODEL NO.	WEIGHT LBS	UNIT I.D.	VOLTS	PHASE	UNIT MCA		MFA/MOCP	MODEL NO.	WEIGHT LBS	
FC-T0	30,000	32,000	45	775	208/230	1	15	PKA-A30K	46	AHP-T0	208/230	1	28A	30A/40A	PUZ-HA30NH	265	SEE NOTES/SPECS BELOW

- NOTES:
- MODEL NUMBERS ARE MITSUBISHI "P-SERIES". FUJITSU AND DAIKEN MAY BE BID AS EQUAL.
 - PROVIDE/INSTALL REFRIGERANT LINES TO/FROM INDOOR FAN COIL TO ROOF MOUNTED CONDENSING UNIT PER MFR REQUIREMENTS. ROUTE REFRIGERANT LINES & POWER/CONTROLS THRU EXISTING ROOF VIA PORTAL PLUS 5-HOLE PIPE PORTAL/ROOF CURB/BOOT SYSTEM. COORDINATE LOCATION & ROOF MOUNTING REQUIREMENTS WITH ROOFING CONTRACTOR.
 - MOUNT CONDENSING UNIT ON A MECHANICAL SUPPORT PLATFORM (MIRO #STANCHIONED HD-BG - 38"W x 14"D WITH 24" HIGH LEGS ABOVE ROOF), WITH PROPER CLEARANCES AS REQUIRED FOR AIRFLOW AND MAINTENANCE. COORDINATE LOCATION & ROOF MOUNTING REQUIREMENTS WITH ROOFING CONTRACTOR.
 - TRAP/DRAIN CONDENSATE FROM FAN COIL UNIT VIA GRAVITY TO SANITARY SYSTEM, COORDINATE WITH P.C.
 - PROVIDE OPTIONAL WALL MOUNTED/HARDWIRED T-STAT CONTROLLER (#PAR-33MAA).
 - PROVIDE OPTIONAL CONDENSATE DRAIN PUMP WHERE CONDENSATE CAN'T DRAIN VIA GRAVITY.
 - PROVIDE OPTIONAL DRAIN PAN LEVEL SENSOR (#DPLS2) TO SHUT OFF FAN COIL IF DRAIN PAN OVERFLOWS.
 - PROVIDE OPTIONAL 3-POLE DISCONNECT (#TAZ-MS303) FOR EACH INDOOR FAN COIL UNIT.

ADDENDUM #1

METHODS OF NOTATION



MECHANICAL DRAWING INDEX

- M1 MECHANICAL TITLE SHEET
- M2 MECHANICAL PLANS
- M3 MECHANICAL SPECIFICATIONS

JLK Engineering
Project Number:
AEA 2002-01
The Charles C. Swain
©JLK Engineering LLC
5766 Calabasas Ct. | Chevy Chase, MD 20815 | P 301-468-4631
www.jlkengineering.com

ANTHONY P. ESSON
ARCHITECT
PO BOX 479
GAYLORD, MICHIGAN 49734
TELEPHONE: (989) 732-0585

DRAWING TITLE
MECHANICAL TITLE SHEET

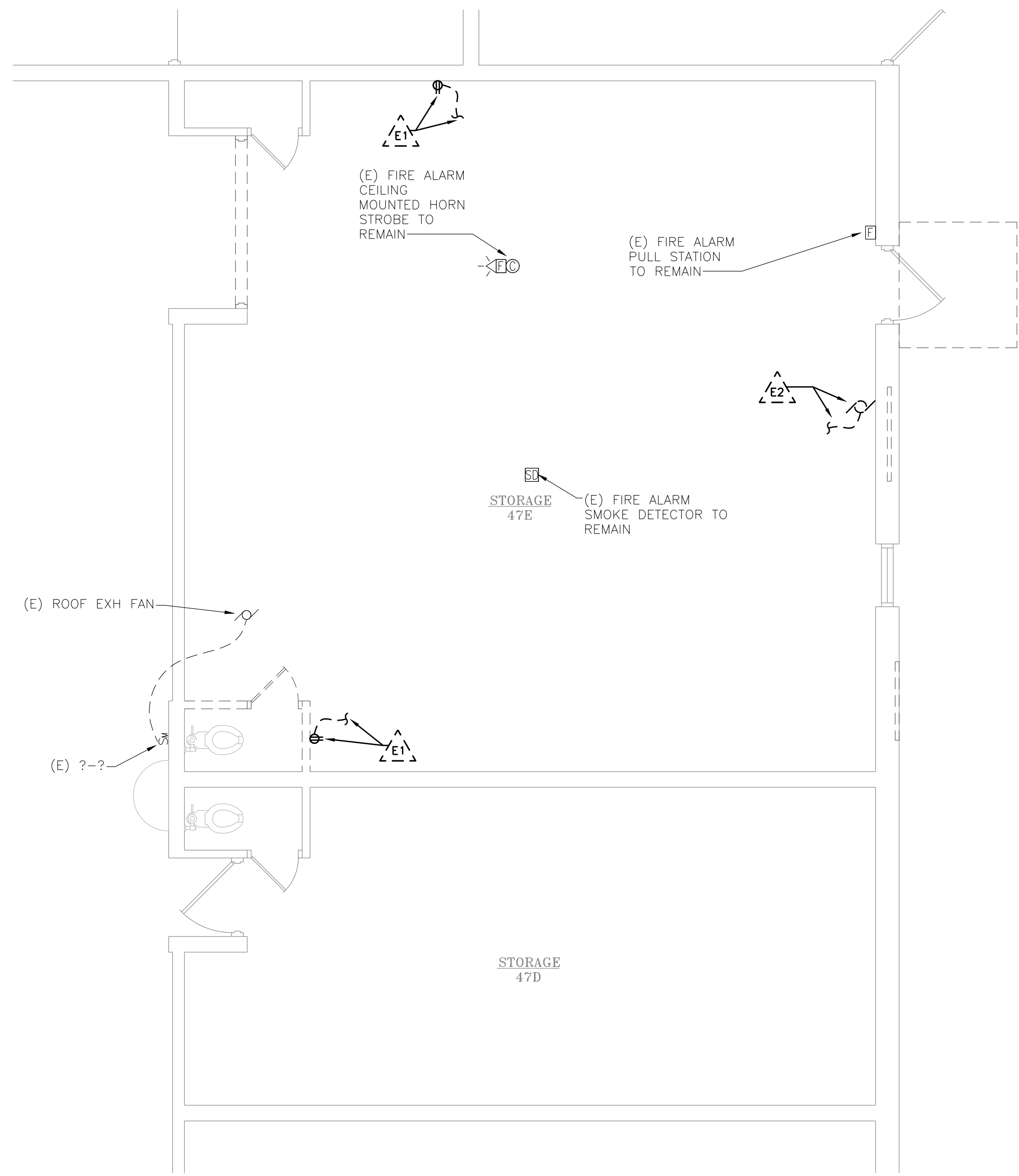
PROJECT TITLE
GAYLORD COMMUNITY SCHOOLS - PROJECT SF3.2
NEMSCA TRANSPORTATION OFFICE
GAYLORD, MICHIGAN

PROJECT NO.
284-20B

DATE
9/18/2020
10/5/2020

SHEET
M1

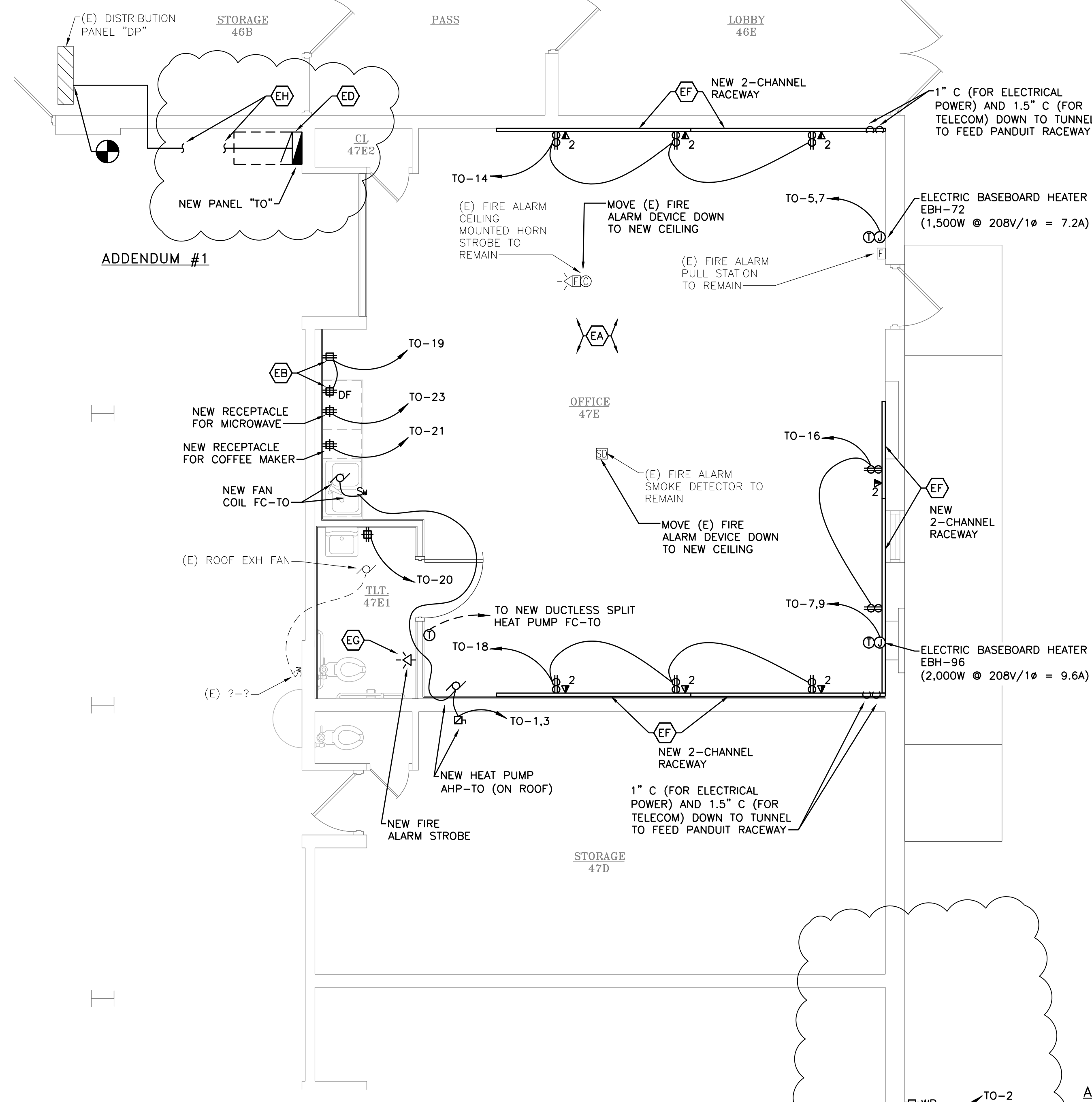
10/5/2020 - FOR ADDENDUM #1



ELECTRICAL POWER DEMOLITION PLAN
SCALE: 1/4" = 1'-0"

KEYED ELECTRICAL POWER DEMOLITION NOTES:

- REMOVE EXISTING (E) RECEPTACLE, AND ASSOCIATED CIRCUIT, ON WALL BEING REMOVED.
- REMOVE EXISTING (E) POWER TO OLD UNIT VENTILATOR.



ELECTRICAL POWER NEW WORK PLAN
SCALE: 1/4" = 1'-0"

KEYED ELECTRICAL POWER CONSTRUCTION NOTES:

- COORDINATE LOCATION AND MOUNTING HEIGHT OF ALL ELECTRICAL DEVICES AND AUXILIARY ELECTRICAL DEVICES (I.E. TELECOM, ETC.) WITH OWNER/OWNER'S REP PRIOR TO ROUGH-IN.
- PROVIDE RECEPTACLE FOR REFRIGERATOR, FOR LOCATIONS WHERE GFI RECEPTACLES ARE REQUIRED AND INSTALLED IN NON-ACCESSIBLE LOCATIONS AND SERVING APPLIANCES. WIRE A RECEPTACLE FROM A NEW DEAD-FRONT (DF) GFI RECEPTACLE IN ACCESSIBLE LOCATION PER NEC.
- PROVIDE NEW NEMSCA BUS BLOCK HEATER RECEPTACLES - ASSUMED 1,000W @ 120V/1Ø. COORDINATE AND CONFIRM POWER REQUIREMENTS AND LOCATIONS WITH OWNER PRIOR TO ORDER.
- COORDINATE AND CONFIRM NEW ELECTRICAL PANEL "TO" LOCATION WITH OWNER PRIOR TO ROUGH-IN.
- PROVIDE FEEDER (4-#3 CU + 1-#8 CU GRD IN 1-1/2" CONDUIT) FOR NEW SUB-PANEL "TO" FROM EXISTING SPARE 100A/3P BKR/SWITCH IN EXISTING DISTRIBUTION PANEL "DP" LOCATED IN STORAGE GARAGE 46B (APPROX. 60 FEET TO THE NORTH OF NEW PANEL "TO". E.C. SHALL FIELD VERIFY & CONFIRM EXISTING CONDITIONS PRIOR TO ROUGH-IN.
- PROVIDE INSERT BLANKS FOR POWER AND TELECOM INSTALLATION IN PANDUIT CHANNELS. MANUFACTURER SUBSTITUTIONS MUST BE DISCUSSED WITH OWNER.
- COORDINATE LOCATION AND MOUNTING HEIGHT OF ALL ELECTRICAL DEVICES AND AUXILIARY ELECTRICAL DEVICES (I.E. TELECOM, ETC.) WITH OWNER/OWNER'S REP PRIOR TO ROUGH-IN.
- EXTEND/CONNECT NEW FIRE ALARM DEVICE TO EXISTING (E) FIRE ALARM SYSTEM. (E) FACP IS A FIRE-LITE JMS-9200 LOCATED IN OFFICE 51B NEAR MAIN ENTRANCE OF EARLY CHILDHOOD CENTER (ECC). SHALL FIELD VERIFY & CONFIRM (E) FIRE ALARM SYSTEM AS REQUIRED TO EXTEND/PROTECT THE PROJECT AREA.

10/5/2020 - FOR ADDENDUM #1

JLK Engineering
Project Number:
AEA 2002-01

JLK ENGINEERING
Mechanical | Electrical | Plumbing

5766 Charlevoix Ct. | Cayce, MI 48735 | P 989-448-4631
www.jlkeengineering.com

ANTHONY P. ESSON
ARCHITECT

PO BOX 479
GAYLORD, MICHIGAN 49734
TELEPHONE: (989) 732-0585

DRAWING TITLE	ELECTRICAL POWER PLANS		
	NEMSCA TRANSPORTATION OFFICE		
PROJECT TITLE	GAYLORD COMMUNITY SCHOOLS - PROJECT SF3.2		
	NEMSCA TRANSPORTATION OFFICE		
PROJECT NO.	284-20B		
	GAYLORD, MICHIGAN		
DATE	9/18/2020		
	10/5/2020		
SHEET	E2		